



ADLERSHOF BERLIN STUDENT VILLAGE

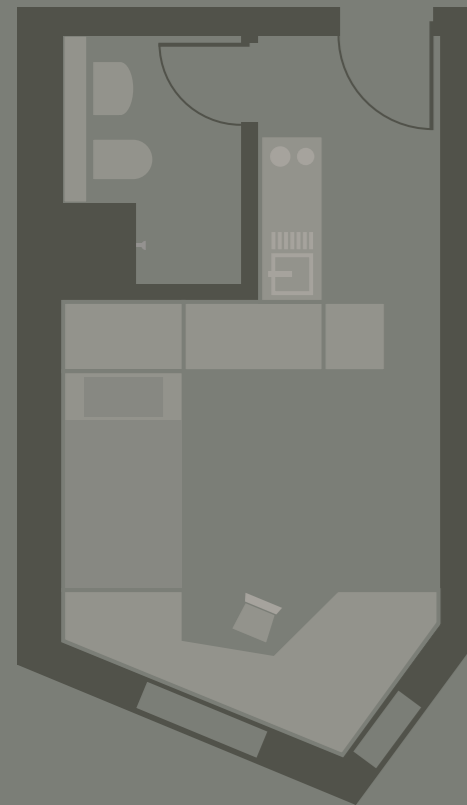
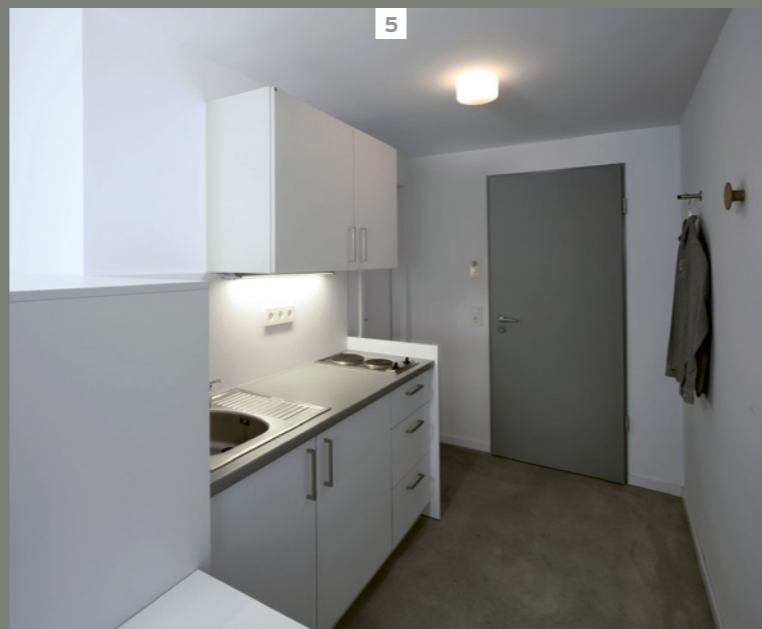
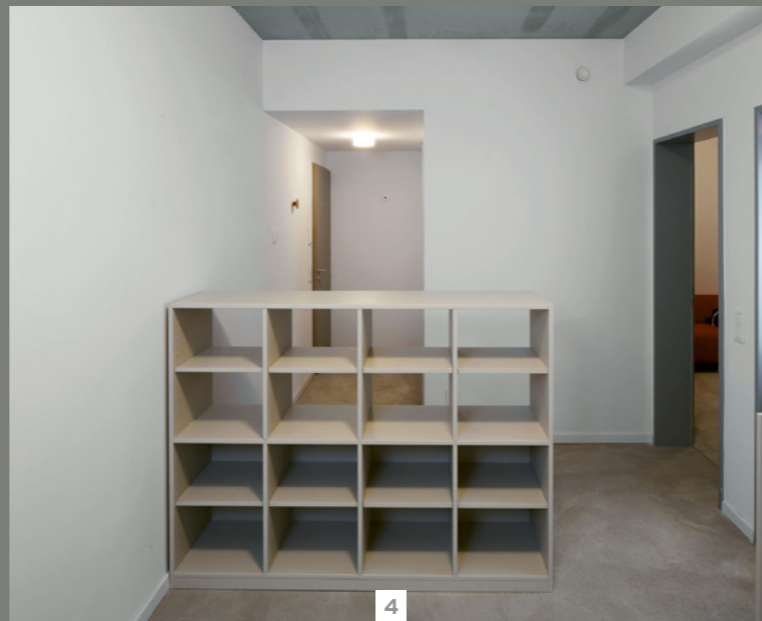


1/2 Individual study bays: work areas with storage space, natural light, and a view. The built-in furniture is part of the building design and ensures every last corner can be used.

3 Multifunctional furniture is constructed to provide flexibility, even in the tightest of spaces.

4/5 Pantry kitchen and dining area are visually separated by room dividers that provide additional storage space.

6/7/8 The communal kitchens feature wall cupboards and compact kitchen units, as well as tables arranged in long rows.



BUILDING

Adlershof Berlin student village, 2014

Project

Village-style student accommodations with infrastructure providing study, sleeping and living space on an 118,400 ft² campus.

Concept

As is usual in a village, the ten 3- and 4-story buildings (with a total of 386 accommodation units) are arranged around a central square, housing all the important facilities. The uniform appearance of the facade is broken up with geometrically irregular study bays featuring wooden cladding and colorful sunshades.

Architects

Die Zusammenarbeiter Gesellschaft von Architekten mbH, Berlin
Claudia Sieper, Christian Schöningh with Sonia Sandberger, Tobias Vogel and Stephanie Nick as well as Lutz Hüning (Interior/furniture)

FEATURES

Interior Design

Concept

In order to create as much room as possible in a small space, the architecture and the fittings have been molded into one - A2S integrated the desks and built-in cupboards into every single one of the 386 individual bays with millimetric accuracy. Such complex made-to-measure work requires speedy and exact planning, starting with the manufacturing of the boards. The rooms are discreetly divided into white and grey areas to separate the living space from the study areas.

Options

The apartments have plenty of storage space, without cluttering the area. The discreet furnishings leave plenty of options for individuals to arrange rooms as they wish. The large communal sitting rooms and kitchen areas feature storage systems with roomy individual lockers, ensuring everything is in its place, yet easily to locate.

Sustainability

Quality made in Germany. Responsible management of resources is essential for products that will shape generations to come. A2S have already netted a host of awards and certificates for their short manufacturing chains, refusal to use solvents and tropical woods, and standards that are well within legal maximums.



DER BILDUNGSEINRICHTER.